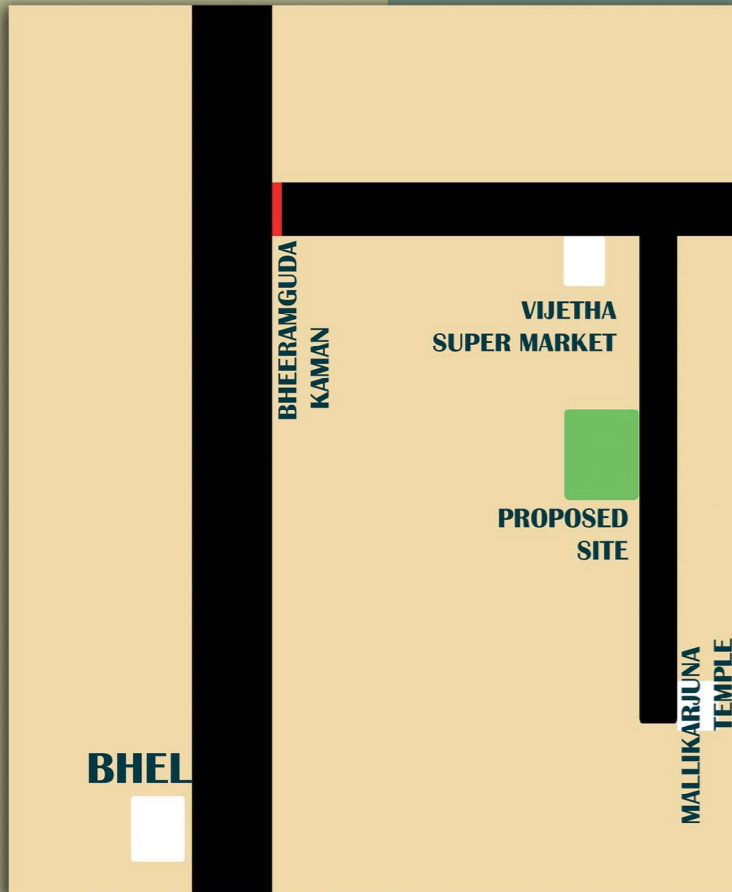


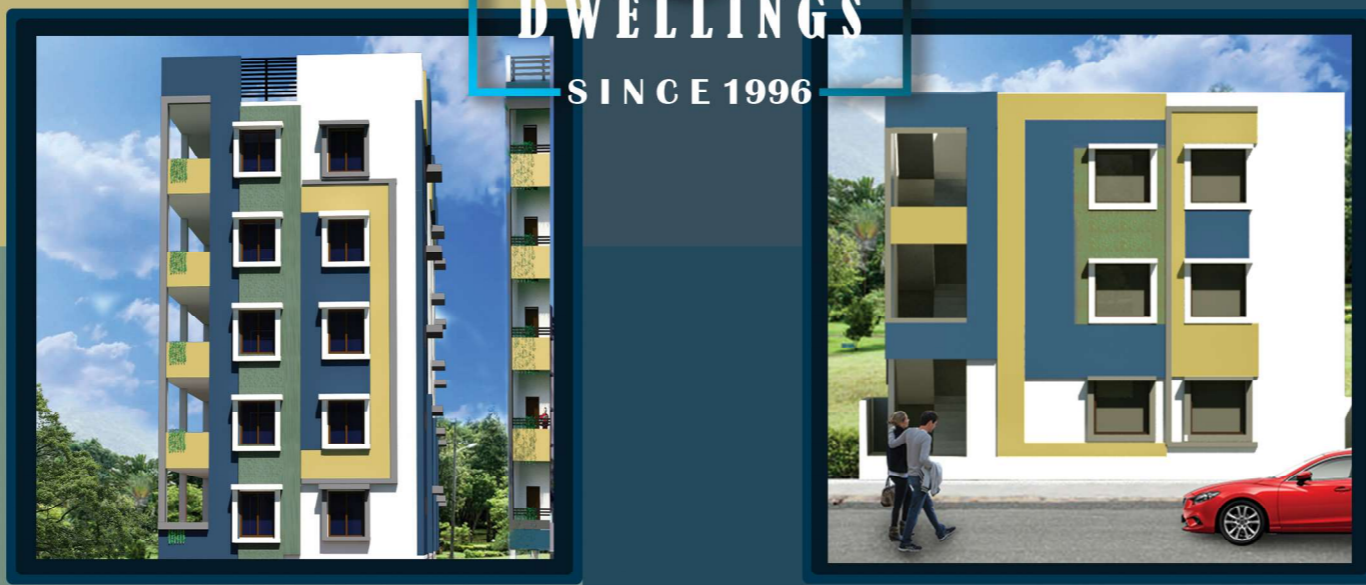
LOCATION



SPECIFICATIONS

- Structure**
R.C.C. Framed Structure.
- Super Structure**
Exterior walls are 9" and others are 4" thick red / cement brick with cement mortar.
- Plastering**
Two coats of plastering with sponge finish.
- Painting**
All internal walls of the flat including ceiling will be finished with 2 coats of putty and emulsion (Asian or Nerolac) over one coat of primer. Exterior walls will be finished with 2 coats of exterior emulsion (Asian or Nerolac) over one coat of primer.
- Main Door**
Teak Wood frame and Pre-Molded Flushed Wood shutter with glossy polish on both sides.
- Internal Door**
Internal doors with Wooden Frames and Flush Shutters.
- Windows**
UPVC Frames with Clear Glass with provision for Mosquito Mesh Shutters.
- Window Grills**
M.S. enamel painted grills and aesthetically designed.
- Hardware**
Godrej locks along with designer fittings for main door.
- Flooring**
Vitrified tiles flooring in all rooms, plain ceramic tiles in balconies. Aesthetically designed Vitrified tiles for corridors. Marble or Vitrified flooring for staircase. Lift wall with aesthetically designed Vitrified / Marble / Granite cladding.
- Kitchen**
Granite platform with stainless steel sink with both municipal and bore water provisions and ceramic tiles dadoing upto 2' height.
- Toilets**
All toilets with non slippery Ceramic tile flooring and wall cladding with ceramic tiles up to door height. One wall mixture with shower of Cera or equivalent make. EWC with flush tank and wash basin of Cera / Hindware or equivalent make. Provision for Geyser in all toilets. CPVC/PVC piping.
- Electrification**
Finolex/Havells or equivalent cables using copper wiring through PVC conduits concealed in walls and ceilings. Adequate power points with modular Legrand/ Havells or equivalent switches.
- Telecom**
Telephone points will be provided in all master bed room and living rooms.
- Television**
Provision for cable T.V. in all master bed room and living rooms.
- Water Supply**
Underground and Overhead storage tanks of suitable capacity with Bore-well as an auxiliary source of water supply.
- Aminities :**
- Generator**
Power backup for lifts and common areas.
- Elevators**
Two high speed elevators of Johnson or equivalent make with V3F drive (for smooth operation, Energy saving & Lowering wear and tear).
- Transformer**
Provision of two transformers.
- Parking**
Provision for parking at Ground level. Well-lit and numbered parking bays. Easy access from building lobbies with wide staircases, elevators and walkways to gardens / upper floors.

KOTA'S DWELLINGS SINCE 1996



Address

Plot no's 5,6,6A,6B,6C,
Maruthi nagar,
Bheeranguda,
Ameenpur Municipality,
Sangareddy Distrect.
CELL: 9642404799

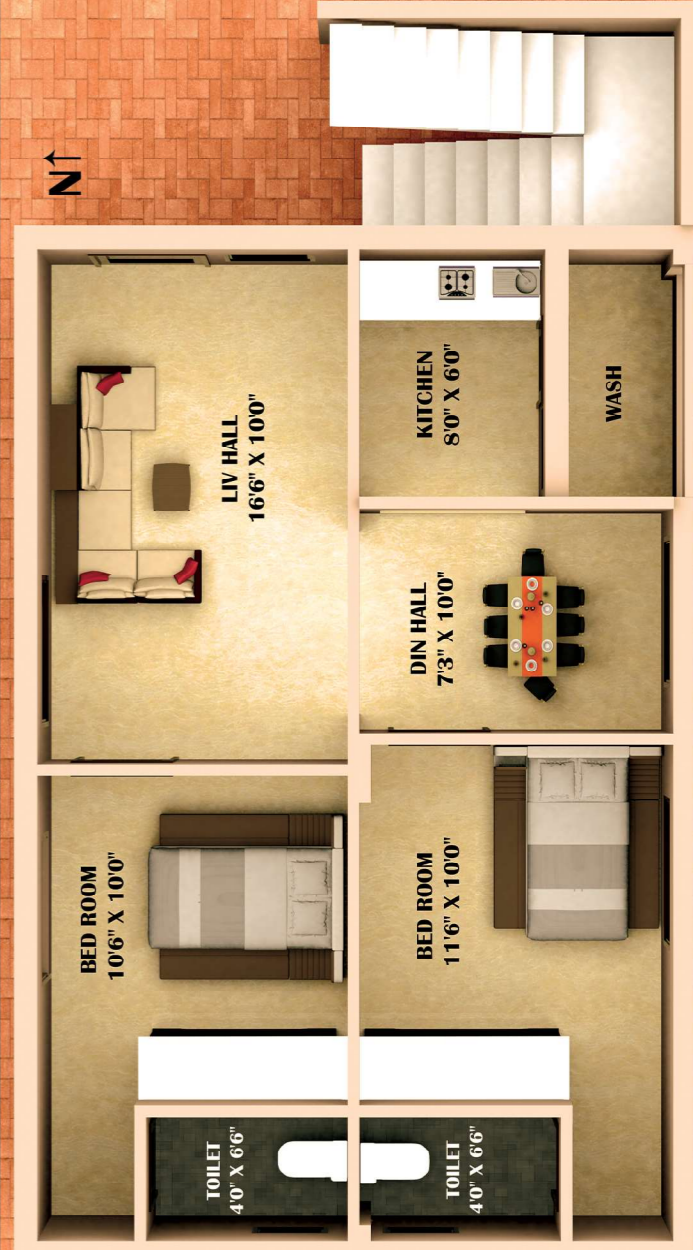
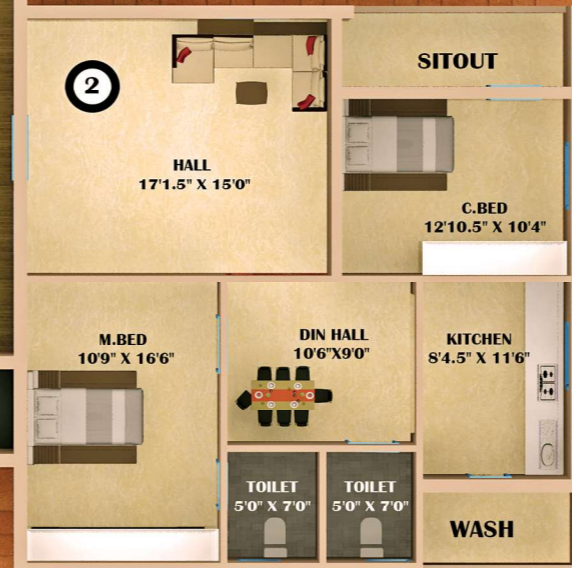
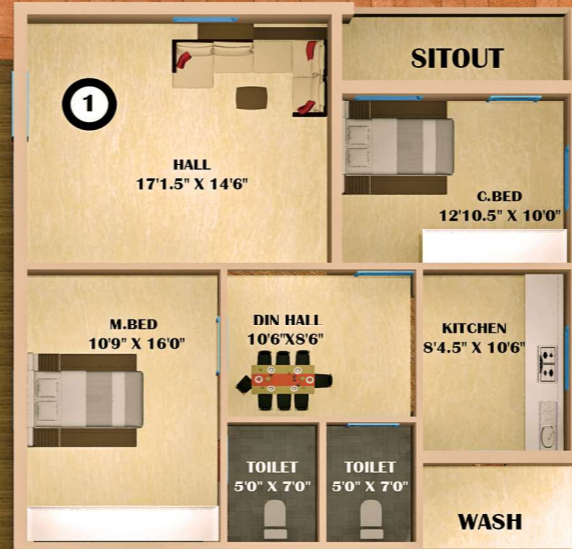
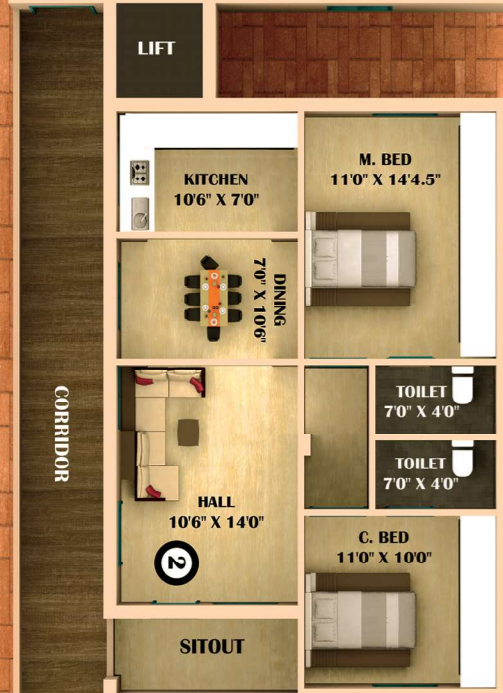
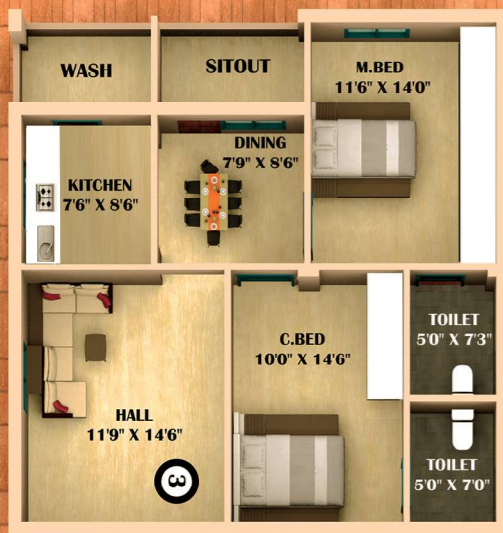
ARCHITECTURE DESIGN BY



BLOCK B

BLOCK A

BLOCK C



AREA STATEMENTS

BLOCK A

- 1 1290 SFT
- 2 1330 SFT
- 3 1260 SFT
- 4 1280 SFT

BLOCK B

- 1 1270SFT
- 2 1028SFT
- 3 1090SFT

BLOCK C

930 SFT (EACH FLOOR)

KOTA'S
DWELLINGS
SINCE 1996